

NHIN Direct Pilot

Overview and Project Approach



Contents

- What is NHIN Direct?
- Who is involved?
- RIQI Opportunity
- What Problems will be Solved?
- Pilot Overview
- Rollout Vision
- Next Steps



What is NHIN Direct?

- A high-visibility, ONC-sponsored national project providing:
 - A path to provider Stage 1 Meaningful Use in 2011
 - Practical and achievable health information exchange (hie vs. HIE)
- A secure, scalable, standards-based mechanism to send health information directly to known, trusted recipients over the Internet



Who is Involved?

200+ organizations are actively involved, including product vendors, government organizations, clinical groups, and many others including:

- Alere
- Allscripts
- American Academy of Family Physicians
- Argonne National Laboratory
- Atlas Development
- Axolotl
- CareSpark / MobileMD / Serendipity Health
- Cautious Patient
- Cerner
- Clinical Groupware Collaborative
- CSC
- eClinicalWorks
- EHR Doctors
- Emdeon
- FEI
- GE
- Google
- Greenway Medical Technologies
- Harris Corporation,
- High Pine Associates
- HLN Consulting
- ICA,
- Inpriva
- Intel
- Kryptiq
- LabCorp
- Massachusetts eHealth Collaborative
- MedAllies
- Medical University of SC,
- Medicity
- MedNet
- MedPlus/Quest Diagnostics
- Microsoft
- Mirth Corporation
- MOSS
- Nationwide Health Information Technology
- NIH NCI
- NIST
- NYC Dept. of Health and Mental Hygiene's PCIP
- Oregon HIE Planning Team
- Redwood MedNet
- RelayHealth
- Rhode Island Quality Institute
- Secure Exchange Solutions
- Siemens
- South Carolina SDE
- SureScripts
- Techsant Technologies
- TN State HIE
- VA
- VisionShare



RIQI Opportunity

We (RIQI and pilot partners) are in an unique position to build upon existing national focus and industry leadership with a successful pilot implementation in 2010 and broader adoption in 2011

- RIQI has been involved with the national NHIN Direct workgroup since day 1. Already a key player driving national discussions.
- ONC officials have identified Rhode Island and the Pilot as a key national demonstration / spotlight project based on established and funded components of the national strategy:
 - Beacon Community
 - Regional Extension Center
 - Health Information Exchange (as a platform and an activity)
 - Approved NHIN Direct Pilot Project
- HIE is a particular legislative, regulatory, and political priority in the state



What Problems will the Pilot Solve?

The RIQI Pilot enables an innovative solution to two difficult problems that will face healthcare providers and health information exchanges in the coming years:

How do providers demonstrate Stage 1 Meaningful Use for health information exchange (hie)?



How do you feasibly feed data from hundreds of heterogeneous practices into state Health Information Exchanges (HIE)?



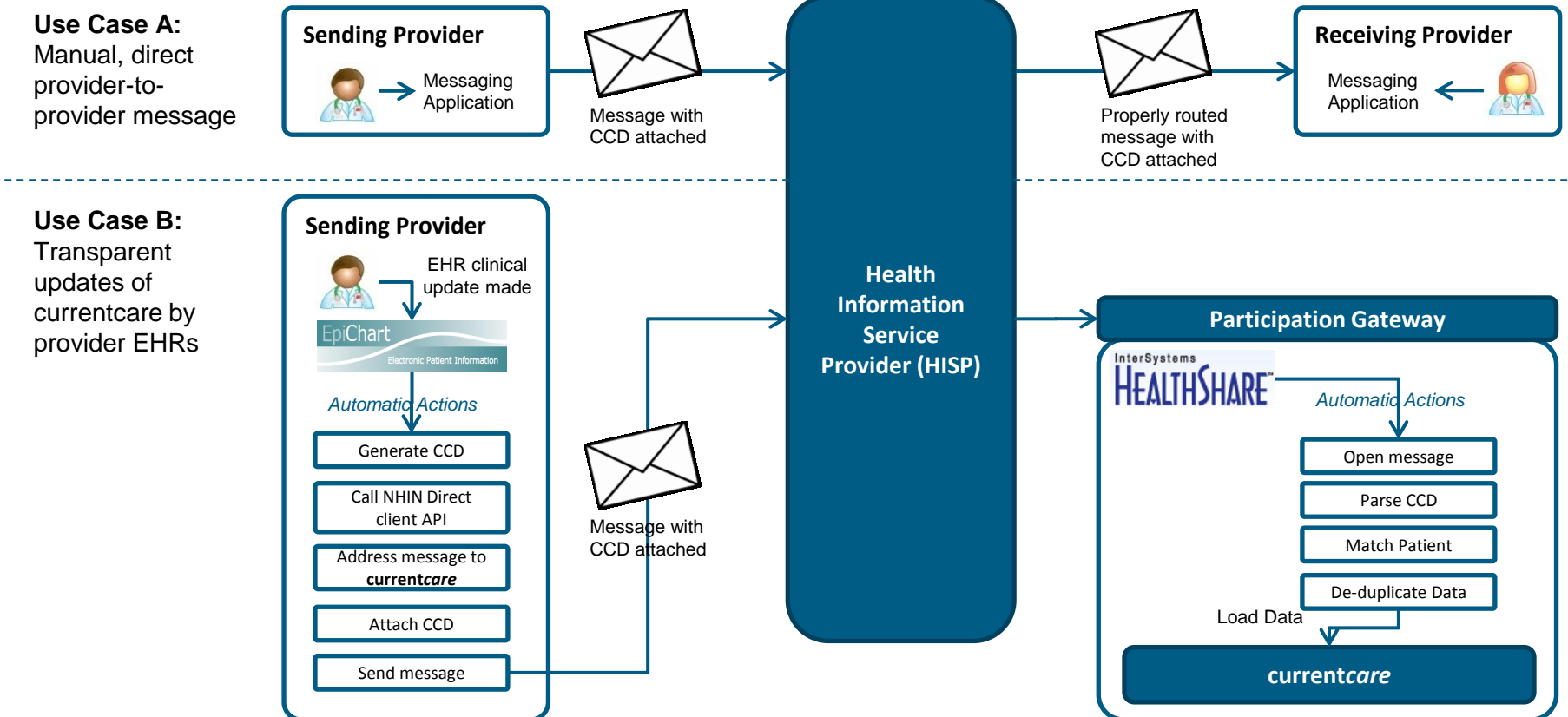
NHIN Direct

The RIQI pilot will prove out solutions to both of these use cases



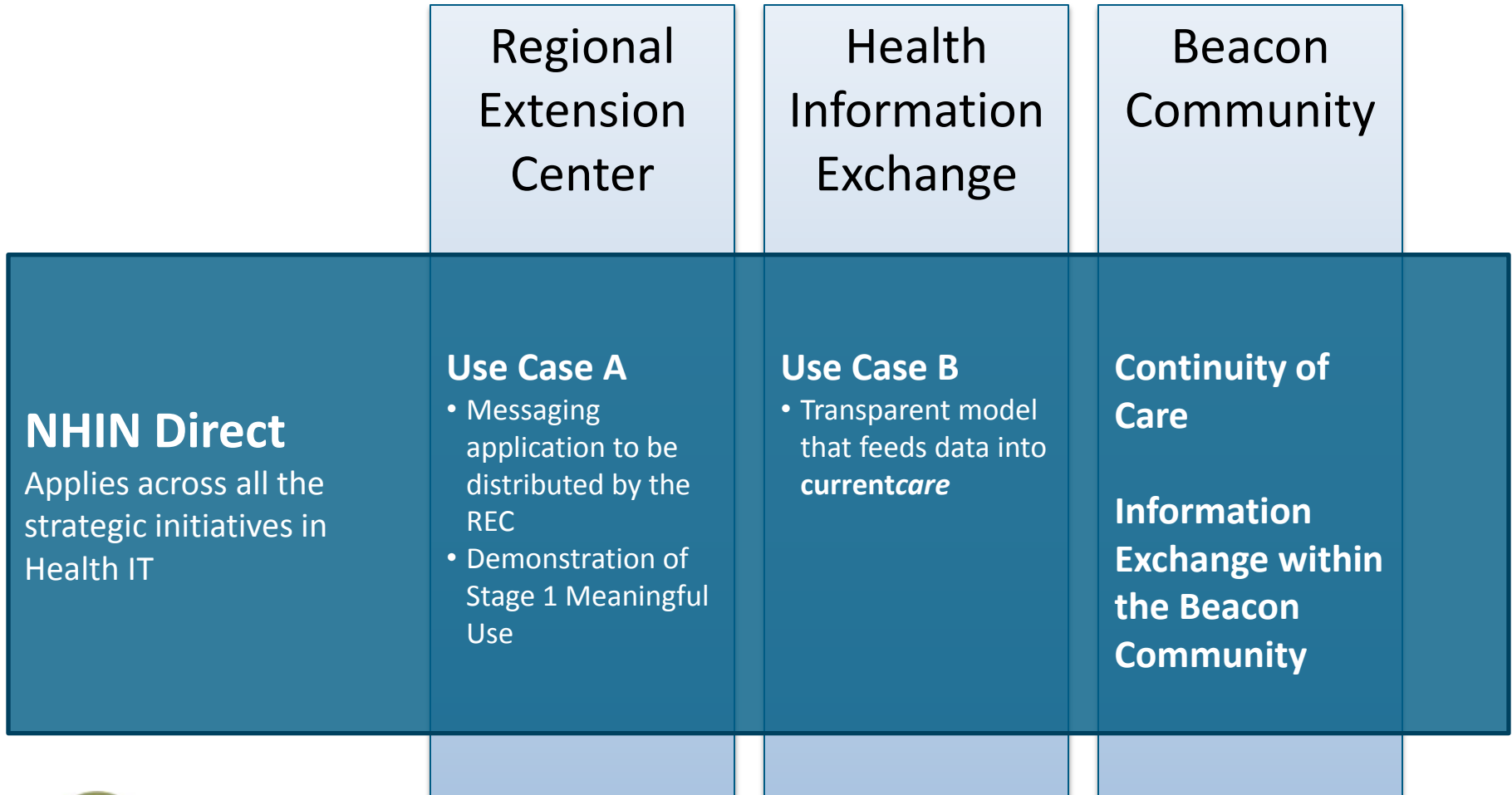
Pilot Overview

Two distinct use cases will be met: (A) direct provider-to-provider communication that meets Stage 1 Meaningful Use for health information exchange, and (B) transparent clinical updates from the EHR to *currentcare*, both via NHIN Direct



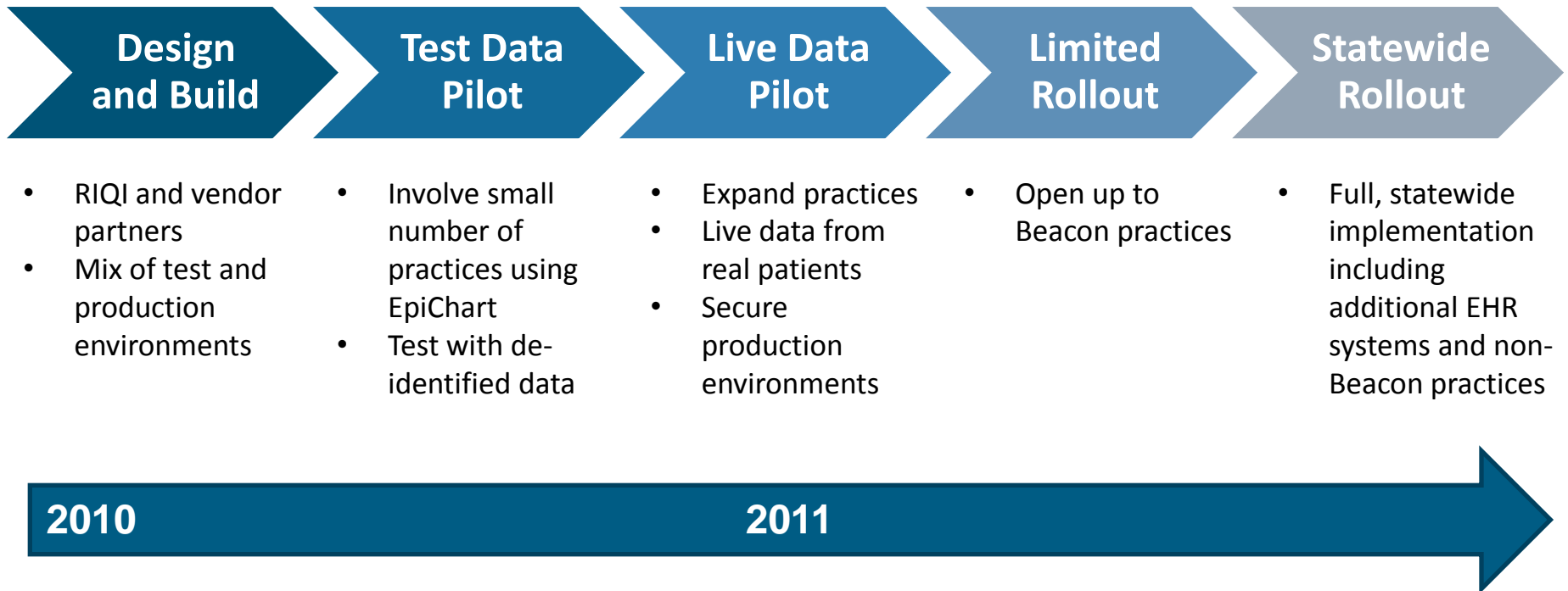
Pilot Overview

NHIN Direct has intersections with the all aspects of health IT in Rhode Island, enabling key requirements of strategic initiatives in the state:



Rollout Vision

Pilot partners will be instrumental as NHIN Direct is rolled out in phases with the Pilot in 2010 and more broadly across the state in 2011:



Appendix – Pilot Stakeholders

Stakeholder	Role	Key Responsibilities	Contacts
Rhode Island Quality Institute	Project Sponsor	<ul style="list-style-type: none"> • Provide strategic direction to all stakeholders • Make technical staff available to advise all stakeholders • Provide timely response and review of deliverables, issues, and risks 	<ul style="list-style-type: none"> • Gary Christensen, COO • Darby Buroker, Beacon Program Manager • Charles Dansereau, Director, IT • Joan Pirraglia, IT
Arcadia Solutions	Project Management	<ul style="list-style-type: none"> • Develop and maintain project plan, issues and risks tracking, weekly status reporting, and other project management artifacts as needed • Act as single point of contact and coordination for all stakeholders • Coordinate development of Solutions Requirement Document • Create and coordinate pilot acceptance testing • Coordinate vendor selection of HISP based on solution requirements 	<ul style="list-style-type: none"> • Greg Chittim, Principal • Bert Noey, Senior Consultant
Polaris Medical Management (EpiChart)	EHR Integration	<ul style="list-style-type: none"> • Provide technical expertise to develop Solutions Requirement Document, including impacts to EpiChart and related protocols/services • Provide subject matter expertise support for provider engagement and in development of general EHR module integration and • Assist in execution of acceptance testing • Participate in regular project updates 	<ul style="list-style-type: none"> • Noah Benedict, COO • Michael Oakes, Director, IT
InterSystems (HealthShare)	HIE Integration	<ul style="list-style-type: none"> • Provide technical expertise to develop Solutions Requirement Document, including impacts to HealthShare and related protocols/services • Assist in execution of acceptance testing • Participate in regular project updates 	<ul style="list-style-type: none"> • Kate Schell, Account Manager • Mike LaRacca, Product Manager • Jeremy Derby, Technical Architect
Inpriva (HISP)	Connectivity Integration	<ul style="list-style-type: none"> • Provide technical expertise in pilot implementation • Assist in execution of acceptance testing • Participate in regular project updates 	<ul style="list-style-type: none"> • Pat Pyette, CTO • Don Jorgensen, CEO



Appendix – Reference Information

The following sites provide a solid background for the NHIN Direct pilot in Rhode Island

General:

- HHS NHIN Overview: http://healthit.hhs.gov/portal/server.pt/community/healthit_hhs_gov_nhin/1142
- NHIN Connect: <http://www.connectopensource.org/>

Stakeholders:

- RIQI: <http://www.riqi.org>
- Polaris Medical Management: <http://www.polarismedical.com/>
- InterSystems: <http://www.intersystems.com/healthshare/index.html>
- Arcadia Solutions: <http://arcadiasolutions.com/>

NHIN Direct:

- NHIN Direct Wiki: <http://nhindirect.org/>
- NHIN Direct Blog: <http://blog.nhindirect.org/>
- Introduction to NHIN Direct by Dr. John Halamka: <http://geekdoctor.blogspot.com/2010/03/introducing-nhin-direct.html>
- NHIN Overview Document: http://nhindirect.org/file/view/NHIN_Direct_Overview_ForConsensusFINAL.doc
- Documentation and Testing: <http://nhindirect.org/Documentation+and+Testing+Workgroup>
- Implementation Workgroups: <http://nhindirect.org/Implementation+Group+%26+Our+Workgroups>
- Consensus Proposal: <http://nhindirect.org/Consensus+Proposal>
- User Stories: <http://nhindirect.org/User+Stories>
- Deliverable Tracker: <http://nhindirect.org/Deliverable+Tracker>
- RIQI Pilot Project Brief: <http://nhindirect.org/Pilot+Project+Brief+-+Rhode+Island+Quality+Institute>
- RIQI Pilot Share Documents page: <http://nhindirect.org/RIQI+Pilot+Shared+Documents>
- Demo at Redwood Mednet HIE Conference: <http://nhindirect.org/NHIN+Direct+Demo+at+Redwood+Mednet+HIE+Conference>
- Reference Implementations
 - Overview: <http://nhindirect.org/Reference+Implementation+Workgroup>
 - Java Source Code: <http://nhindirect.org/Java+Reference+Implementation>
 - C# Source Code: <http://nhindirect.org/Reference+Implementation+Workgroup>

